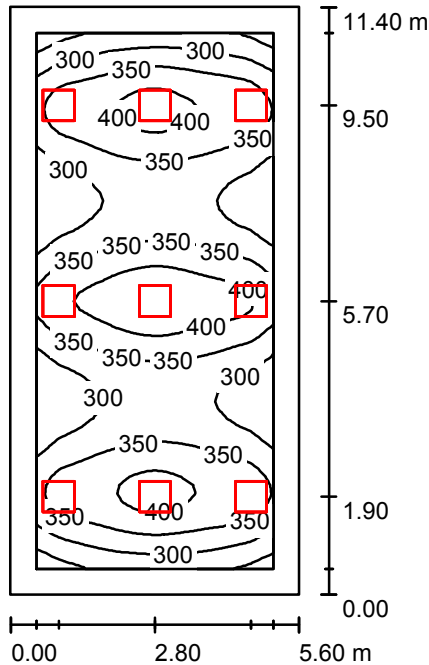


Operator  
Telephone  
Fax  
e-Mail

## 2.03 / Summary



Height of Room: 3.100 m, Mounting Height: 3.100 m, Maintenance factor: 0.90

Values in Lux, Scale 1:147

Surface	$\rho$ [%]	$E_{av}$ [lx]	$E_{min}$ [lx]	$E_{max}$ [lx]	$u_0$
Workplane	/	342	219	447	0.642
Floor	20	280	162	361	0.580
Ceiling	70	71	52	99	0.740
Walls (4)	50	169	59	407	/

### Workplane:

Height: 0.800 m  
Grid: 64 x 32 Points  
Boundary Zone: 0.500 m

Illuminance Quotient (according to LG7): Walls / Working Plane: 0.504, Ceiling / Working Plane: 0.207.  
Proportion of points with less than 400 lx (for IEQ-7): 87.74%.

### Luminaire Parts List

No.	Pieces	Designation (Correction Factor)	$\Phi$ (Luminaire) [lm]	$\Phi$ (Lamps) [lm]	P [W]
1	9	OCTA-LIGHT PLC OCTL-OLS-30-RNWR (1.000)	3040	3100	28.0
Total:			27359	27900	252.0

Specific connected load:  $3.95 \text{ W/m}^2 = 1.16 \text{ W/m}^2/100 \text{ lx}$  (Ground area:  $63.84 \text{ m}^2$ )